

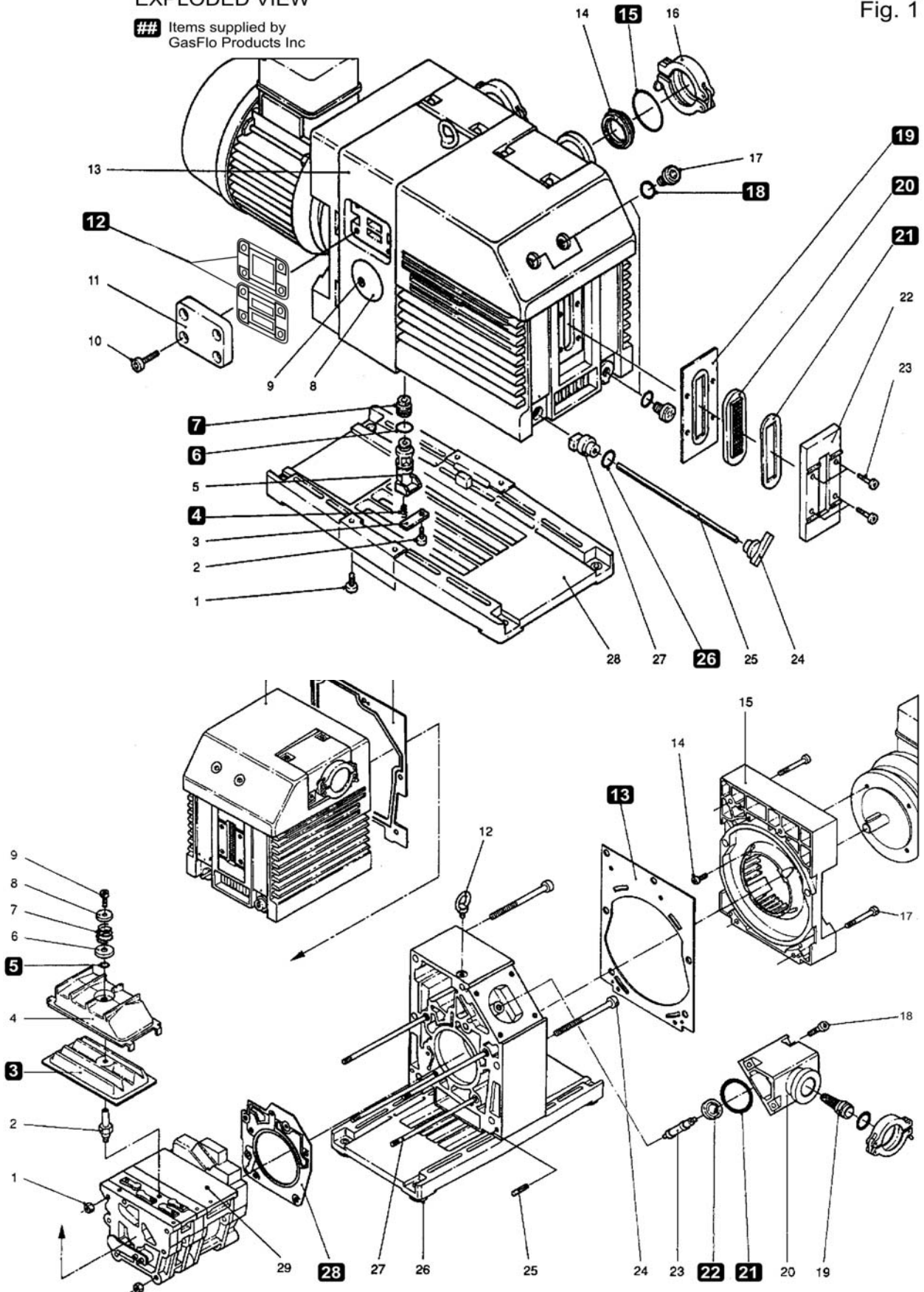


# S & D40/65 B Parts & Kit Lists

## LEYBOLD D40B & D65B EXPLODED VIEW

## Items supplied by  
GasFlo Products Inc

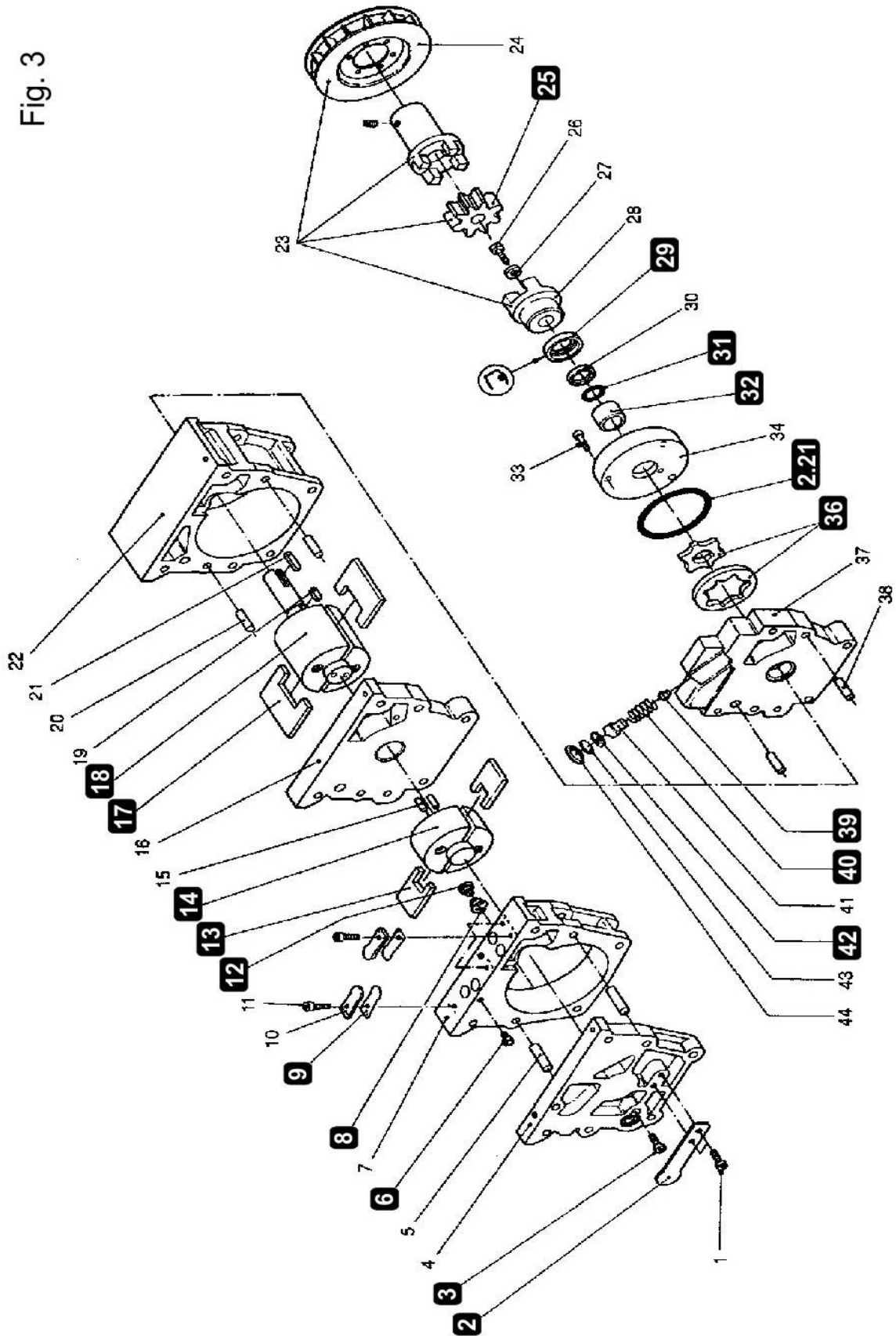
Fig. 1





# S & D40/65 B Parts & Kit Lists

Fig. 3





# S & D40/65 B Parts & Kit Lists

part nr.	description	pkg qty	Dwg#					
				Gasket All	Major S40B	Major D40B	Major S65B	Major D65B
23970147	O RING, VITON	1	1.06	1	1	1	1	1
34861029	SEAL, PISTON VITON	1	1.07	1	1	1	1	1
20010745	GASKET, COVER	1	1.12	1	1	1	1	1
20010746	GASKET, CFS COVER	1	1.12	1	1	1	1	1
23970516	O RING, VITON	2	1.15	2	2	2	2	2
23955165	GASKET, VITON	5	1.18	5	5	5	5	5
20039131	GASKET, SIGHT GLASS (OLD)	1	1.19	1	1	1	1	1
23950121	O RING, BUNA	1	1.21	1	1	1	1	1
23970108	O RING, VITON	1	1.26	1	1	1	1	1
39026014	FILTER, FELT DEMISTER	1	2.03	1	1	1	1	1
23970305	O RING, VITON	1	2.05	1	1	1	1	1
20010741	GASKET, OIL CASE	1	2.11	1	1	1	1	1
20010743	GASKET, HOUSING	1	2.13	1	1	1	1	1
23970223	O RING, VITON	2	2.21	4	4	4	4	4
40050140	VALVE, DISC	1	2.22	1	1	1	1	1
20010744	GASKET, MODULE	1	2.28	1	1	1	1	1
34861028	VALVE, NON-RETURN	1	3.12	1	1	1	1	1
20009095	COUPLING ELEMENT	1	3.25	1	1	1	1	1
23953007	SEAL, SHAFT	1	3.29	1	1	1	1	1
23970016	O RING, VITON	1	3.31	1	1	1	1	1
23973146	SEAL, FLOAT VITON	1	3.39	1	1	1	1	1
20010734	GASKET, FLAT	1	3.42	1	1	1	1	1
22161041	SPRING, S.S.	1	1.04		1	1	1	1
35001179	SIGHT GLASS	1	1.20		1	1	1	1
40175023	VALVE, PRESSURE RELIEF	1	3.02		1	1	1	1
23192034	SLEEVE, SHAFT SEAL	1	3.32		1	1	1	1
39350007	NOZZLE, OIL	1	3.03			1		
39350011	NOZZLE, OIL	1	3.03		1			
39350017	NOZZLE, OIL	1	3.03				1	
39350018	NOZZLE, OIL	1	3.03					1
39350019	NOZZLE, SILENCING	1	3.06		1	1	1	1
22161031	SPRING, SPLIT , S.S.	1	3.08		1	1	1	1
20011245	VALVE, EXHAUST FINGER	4	3.09		4	4	8	8
20010653	VANE, 2ND STAGE	1	3.13			2		
20010652	VANE (1st-D40, 2nd-D65)	1	3.17/13		2	2		2
20010886	VANE, 1ST STAGE	1	3.17				2	2
22161040	SPRING, S.S.	1	3.40		1	1	1	1
<b>Other Spare Parts Available for These Pumps</b>								
32166170	ROTOR, 2ND STAGE	1	3.14			X		
32166171	ROTOR, 2ND STAGE	1	3.14					X
32166164	ROTOR, 1ST STAGE	1	3.18			X		
32166165	ROTOR, 1ST STAGE	1	3.18					X
32166159	GEROTOR SET	1	3.36			X		X