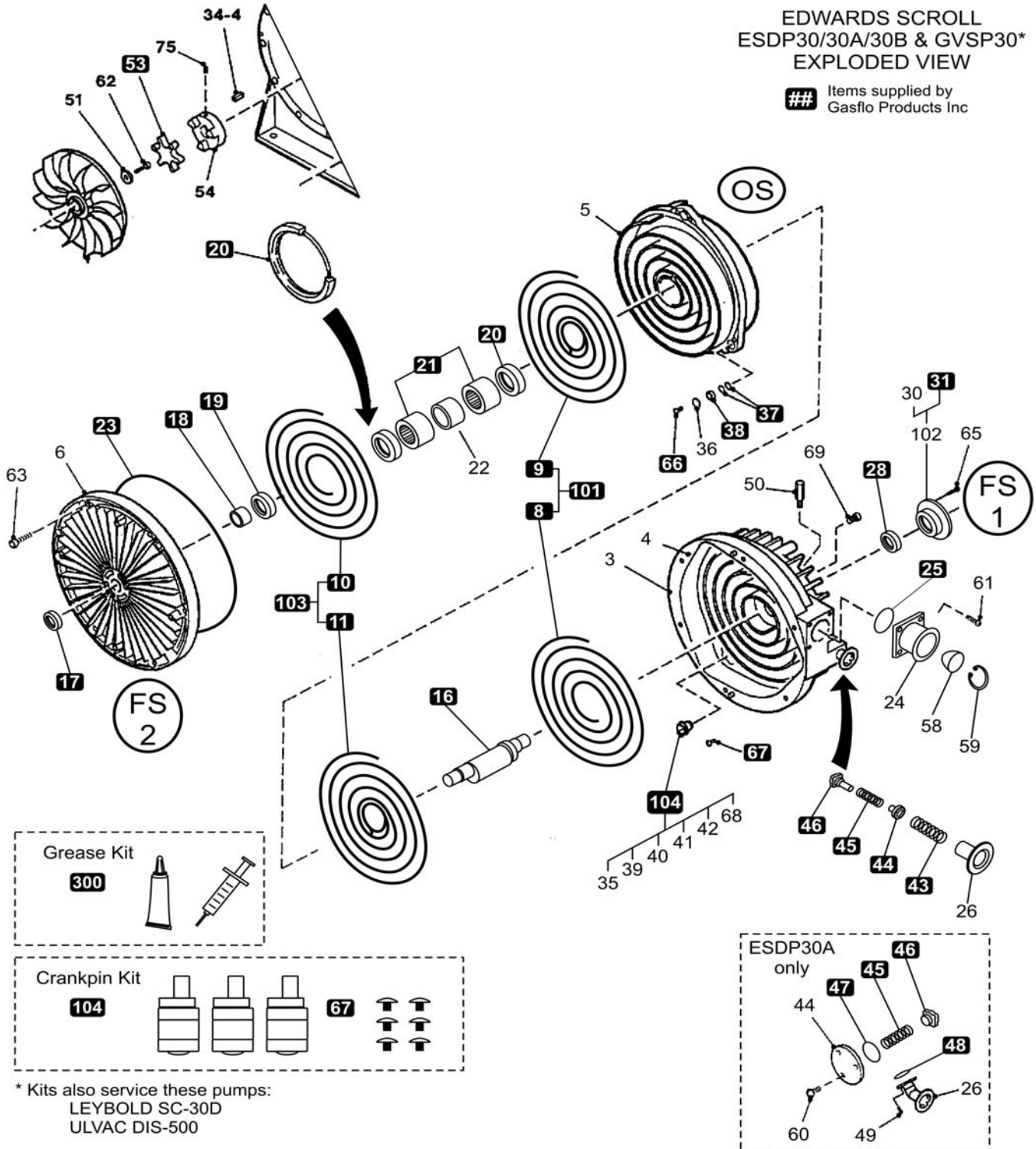




ESDP30/30A/30B & GVSP30 Parts & Kit List

EDWARDS SCROLL ESDP30/30A/30B & GVSP30* EXPLODED VIEW

Items supplied by
Gasflo Products Inc



* Kits also service these pumps:
LEYBOLD SC-30D
ULVAC DIS-500



ESDP30/30A/30B & GVSP30 Kits

	pt nr.	description	ref.	qty	71004006	71004026	71004820	71004800	P71004800
					Crankpin	Tip Seal	Minor	Major	Major+
Bearing Kit (98884230)	08880020	NEEDLE BEARING OS SIDE	21	2				2	2
	08884010	NEEDLE BEARING FS2 SIDE	18	1				1	1
	08884001	NEEDLE BEARING OS CRANK PIN	38	3				3	3
	330008	BALL BEARING FS1	31	1				1	1
	320086	O-RING OS CRANK PIN	37	6				6	6
	71003023	COUPLING SPIDER	53	1				1	1
	400034	SCREW M3x4	66	6				6	6
Tip Seal Kit (98883240)	71004026	TIP SEAL SET FS1, OS(FS2) SIDE	101	1		1		1	1
		TIP SEAL SET FS2, OS(FS1) SIDE	103	1		1		1	1
Shaft Seal Kit (98880240)	08804072	SHAFT SEAL FS1	28	1			1	1	1
	08885012	SHAFT SEAL FS2	19	1			1	1	1
	08882150	GREASE SEAL OS	20	2			2	2	2
	08882100	GREASE SEAL FS1	28	1			1	1	1
	07193002	GREASE SEAL FS2	17	1			1	1	1
	420039	SEAL (MYLAR WASHER)	999	4			4	4	4
Grease Kit (98883101)	PFPEG0050	GREASE	300	1			1	1	1
	SYR05018	SYRINGE, 5cc 18g Blunt Ndl	300	1			1	1	1
Ex Valve Kit (98883330)	08801050	SPRING, EXHAUST SM	43	1			1	1	1
	08804390	SPRING, EXHAUST VALVE LG	45	1			1	1	1
	08802390	VALVE, EXHAUST ESDP30A	46	1			1	1	1
	08805380	VALVE, EXHAUST ESDP30	46	1			1	1	1
	08805041	GUIDE, OUTLET VALVE	44	1			1	1	1
O-Ring Set (98882330)	06995973	O-RING FS2 FLANGE	23	1			1	1	1
	23970304	O-RING INLET FLANGE	25	1			1	1	1
	320121	O-RING EXHAUST CAP	48	1			1	1	1
	ORV0005	O-RING EXHAUST CAP	48	1			1	1	1
	20019794	O-RING EXHAUST FLANGE	47	1			1	1	1
Crank Pin Kit	400033	SCREW, PHILLIPS M4X5	67	6	6				6
	71004006S	CRANKPIN, SINGLE	104	3	3				3

Pump Series Item Usage

part nr	description		GVSP30	ESDP30B	ESDP30A	ESDP30
08802390	VALVE, EXHAUST ESDP30A no stem		Y	Y	N	N
08804390	SPRING, EXHAUST VALVE LG		Y	Y	N	N
08805041	GUIDE, OUTLET VALVE		N	N	Y	Y
08801050	SPRING, EXHAUST SM		N	N	Y	Y
08805380	VALVE, EXHAUST ESDP30 STEM		N	N	Y	Y
ORV0005	O-RING EXHAUST CAP	13.5mm	N	Y	N	N
320121	O-RING EXHAUST CAP	36.2mm	Y	N	N	N
20019794	O-RING EXHAUST FLANGE	17.5mm	Y	Y	Y	N
06995973	O-RING FS2 FLANGE	250mm	Y	Y	Y	Y
23970304	O-RING INLET FLANGE	45mm	Y	Y	Y	Y