

Reduce Your Need to Purchase Expensive New Plates for Vacuum Pumps

Get renewed service life from used plates at a fraction of the cost of new replacement with GasFlo's component remanufacture program.

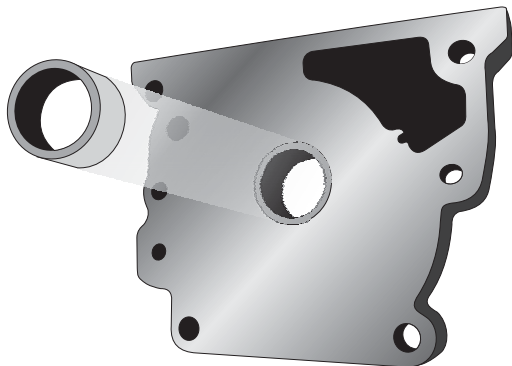
GasFlo's staff has over 20-years of experience in remanufacturing used end plates, center plates and central housings. In this process, customer supplied plates are surface ground to eliminate grooves and new bushings are inserted and bored to meet original specifications.

Over time, plate surfaces are worn and grooved by particles that migrate between rotor and plate faces or by contact with the rotor itself as bushings wear out. Eventually, these grooves will degrade pump performance.

GasFlo microgrinds plate faces, removing a minimal amount of material, to achieve a perfectly flat sealing surface on the plate. Center plates and end plates may be resurfaced many times over.

To bring the plate back to original specifications, we also insert new carbon, bronze or cast iron bushings and precision bore them to ensure proper shaft alignment upon pump reassembly. Carbon bushings are used exclusively for Alcatel AC, CP and CP+ pumps.

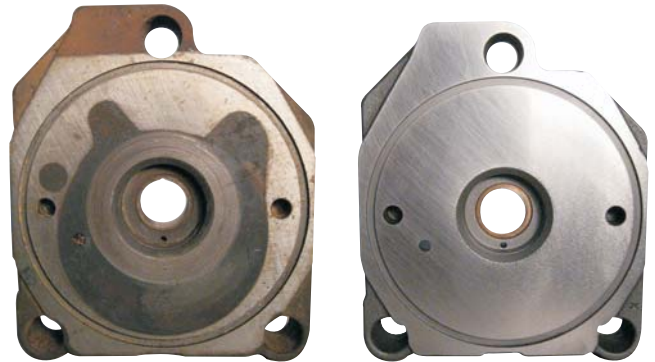
GasFlo remanufactures plates from pumps made by just about every manufacturer. Individual remanufactured plates may be interchanged with other plates.



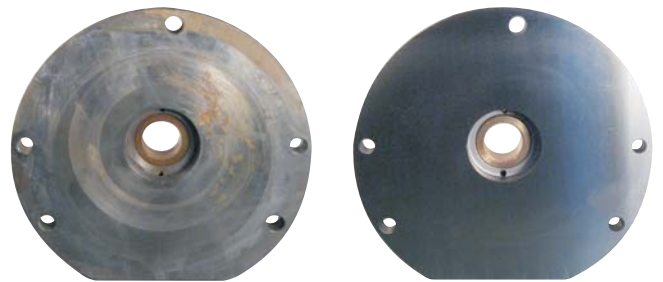
Above: Although original Leybold BCS pump plates are not equipped with bushings, GasFlo can rebush them to renew service life. The bore is enlarged to allow insertion of a cast iron bushing which, in turn, is bored to proper specifications.

A D40/65BCS intermediate plate may be remanufactured at a savings of 68% or more versus the price of a new component.

This issue:
Component Remanufacture, Part 2: Plates



2008A Rear Plate before and after remanufacture. The plate face was surface ground and a new bronze bushing was inserted and bored. These plates are given renewed service life at a 25% savings over the cost of new replacement.



D30A Rear Plate before and after remanufacture. Surface grinding and rebushing these plates offers a savings of 36% or more over the cost of new replacement.

How to take advantage of this service:

Contact Eric Maskrey for a quote or for an RMA number to reference on your shipping label.

Normal turnaround is 7-10 working days. GasFlo may be able to offer immediate availability by exchanging your approved components for remanufactured stock on hand.

Eric Maskrey
Tel: 973-808-9115
Emaskrey@gasflo.com